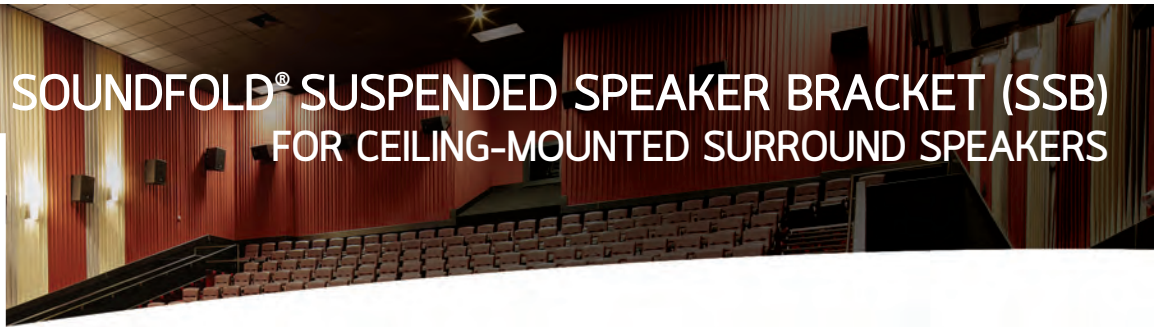


## SOUNDFOLD® SUSPENDED SPEAKER BRACKET (SSB) FOR CEILING-MOUNTED SURROUND SPEAKERS



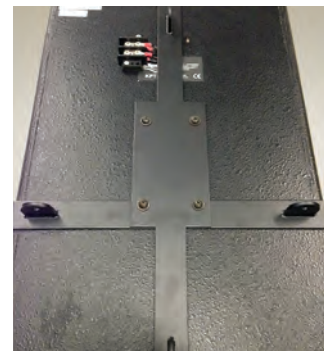
LEVEL OR VARIABLE CANT AND TILT MOUNTING SCENARIOS  
FOUR TIE POINTS FOR MAXIMUM SAFETY AND ADJUSTMENT  
SPEAKER SPECIFIC, SPECIFY SPEAKER MODEL NUMBER

### ADVANTAGES

- Low profile design, nearly invisible mounting
- Solid and safely secured to five sides of the speaker
- Virtually unlimited speaker aiming options
- Economical and durable

### SPECIFICATIONS

- Multiple position mounting options
- Four cable tie points (cable not included) provide for solid, safe mounting
- Five points of attachment to your speaker
  - Speaker plate has four industry standard holes spaced to match existing speaker T-nuts
  - Side arms are sized and punched to match the existing side T-nuts
  - Top and bottom tabs are punched to accept wood screws into the cabinet
- Two-piece bracket design allows for easy shipping and storage
  - Pieces mate using standard four-hole pattern and hardware on speaker back
- Made of 10 gauge steel material
- Black powder coat finish
- Allow 2-3 week lead time for developed speaker types (we do not stock all speaker types due to the wide variety of configuration requirements for each model/brand of speaker)
- Allow 3-4 week lead time for non-stock speaker types (if your speaker type has not been previously established, shop drawings, or possibly an empty cabinet, will need to be submitted in order to determine proper sizing)
- Made in USA



Check local building code to determine appropriate cable and fasteners

Contact Us Today for Details and Pricing

[www.soundfold.com](http://www.soundfold.com)

Phone 937.885.5100  
Fax 937.885.5115  
Email [info@soundfold.com](mailto:info@soundfold.com)

Soundfold  
9200 N. State Rt. 48  
Centerville, OH 45458-5130

Complete Front End Systems, Screen Frames, Theatre Acoustics, Specialty Hardware, Installation

