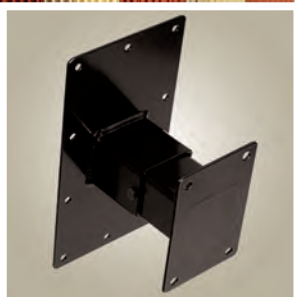


## SOUNDFOLD® SB-6HD HEAVY DUTY SURROUND SPEAKER BRACKET



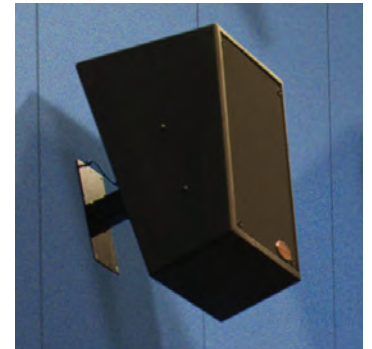
LEVEL MOUNT OR 15-DEGREE TILT  
ONE BRACKET DOES BOTH

### ADVANTAGES

- Easily installed at 0-level or 15-degree tilt
- Solid and safe: 75-pound load rating
- Concealed—practically invisible
- Two-piece bracket allows for single person installation
- Economical and durable

### SPECIFICATIONS

- Two-position 0-level or 15 degrees speaker tilt
- Speaker plate:
  - "UP 0" and "UP 15" stamped on plate to simplify installation
  - Measures 3-3/4" x 6", with four industry-standard holes spaced to match existing speaker T-nuts
  - U-channel fits in wall plate channel and is secured with a 1/4" bolt and self-locking nut
  - Multiple spaced 1/4" holes allow speaker to be mounted at 6", 7", or 8" from the wall
- Wall plate:
  - "UP" stamped at the top of wall plate ensures correct positioning
  - Oversized wall plate has ten 1/4" holes for secure mounting
- Made of 10 gauge steel material
- Black powder coat finish
- Wall and speaker plates packaged separately to allow for early wall plate mounting without lost speaker plates and hardware (15 each per box)
- Made in USA



### ASSEMBLY INSTRUCTIONS

1. Attach the wall plate to the wall with appropriate anchors. Position wall plate so that "UP" is at the top.
2. Lay the speaker face down, then line up the holes in the speaker plate with the matching holes in the back of the speaker. Position the speaker plate with "UP 0" or "UP 15" at the top, depending on the desired tilt.
3. Attach the speaker plate using bolts provided on back of speaker.
4. Lift the speaker into position, and slide the speaker plate into the wall plate.
5. Select the desired distance from the wall.
6. Insert the 1/4" bolt and secure with the self-locking nut.

Contact Us Today for Details and Pricing

[www.soundfold.com](http://www.soundfold.com)

Phone 937.885.5100  
Fax 937.885.5115  
Email [info@soundfold.com](mailto:info@soundfold.com)

Soundfold  
9200 N. State Rt. 48  
Centerville, OH 45458-5130

Complete Front End Systems, Screen Frames, Theatre Acoustics, Specialty Hardware, Installation

